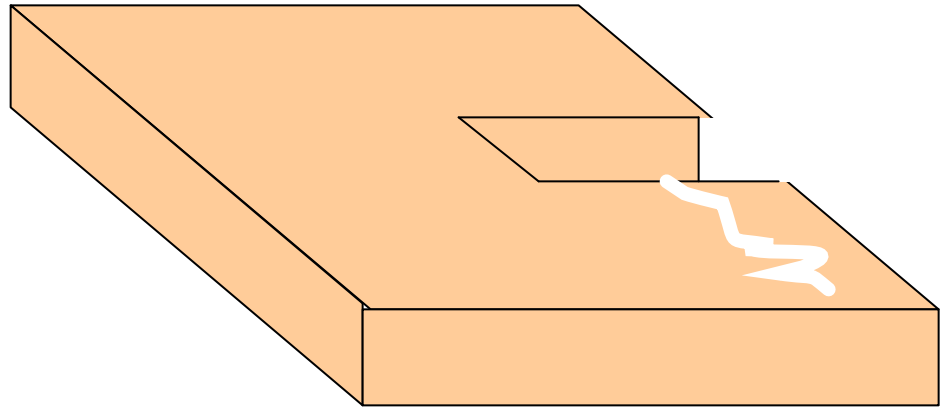
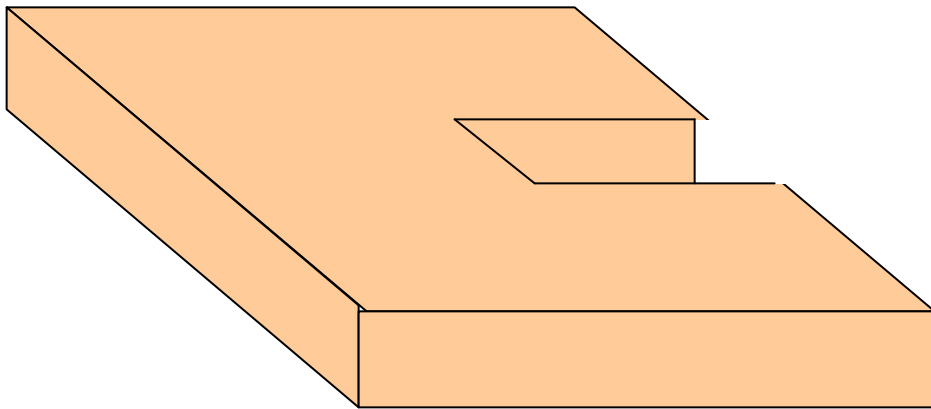
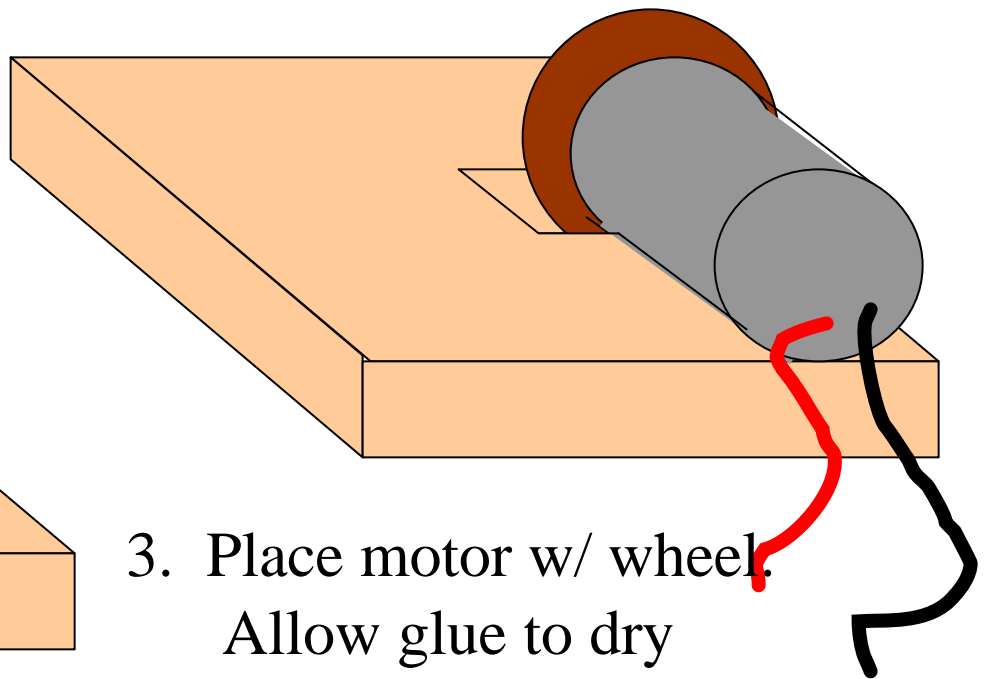




1. Cut a 1/2" thick piece of balsa wood in the pattern shown

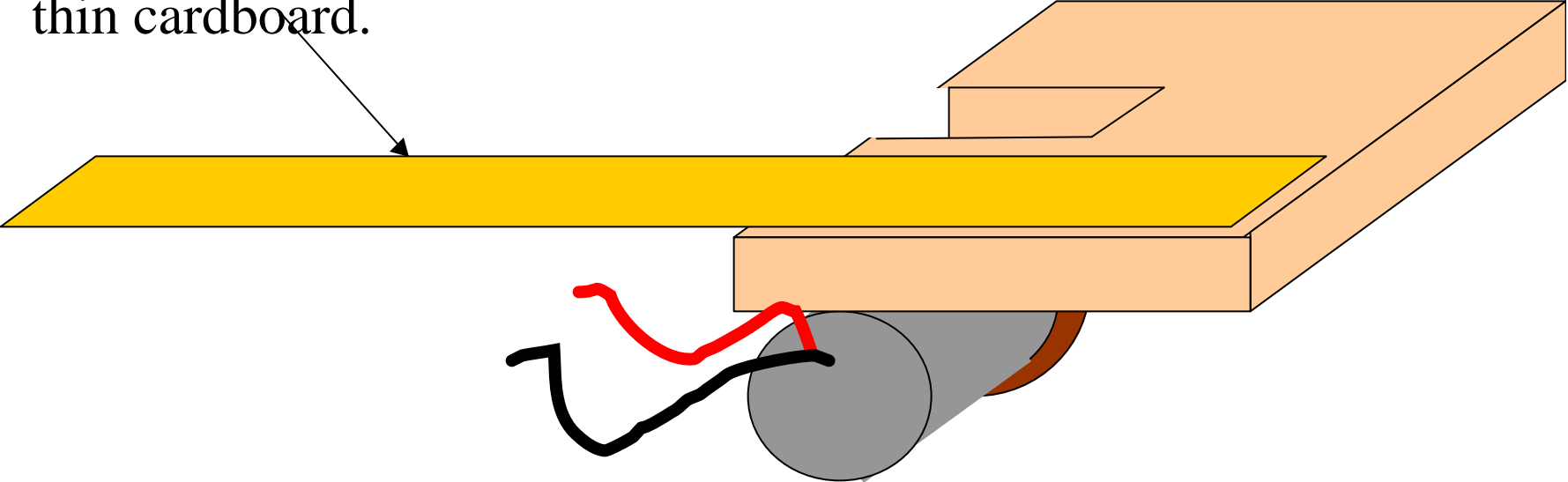


2. Apply Glue

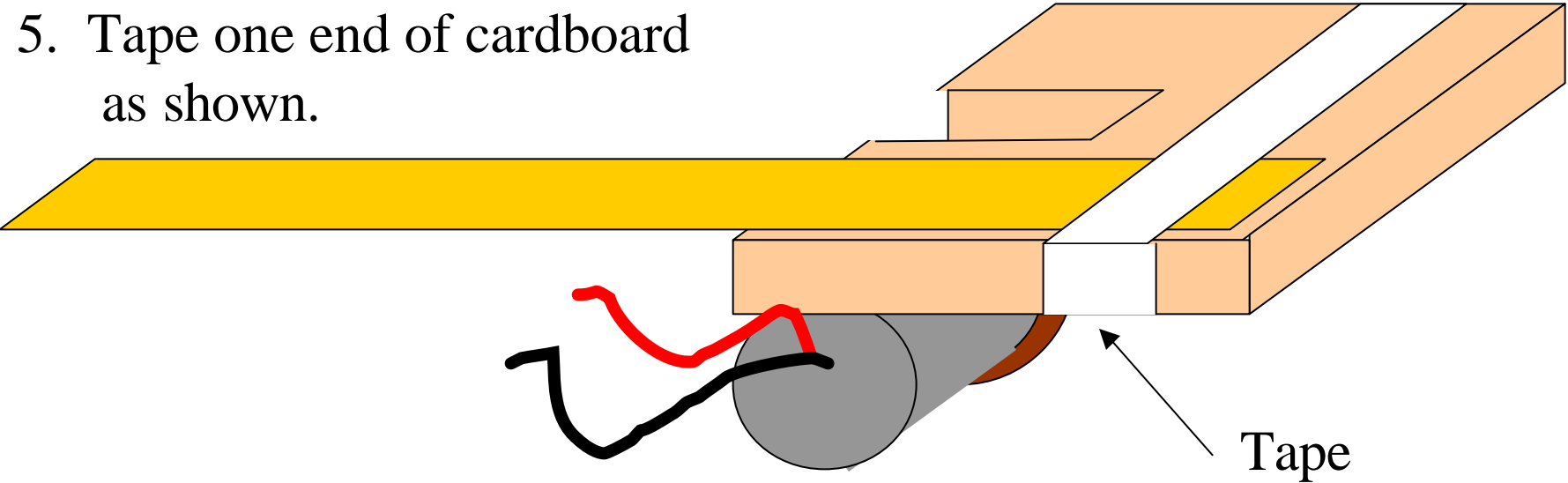


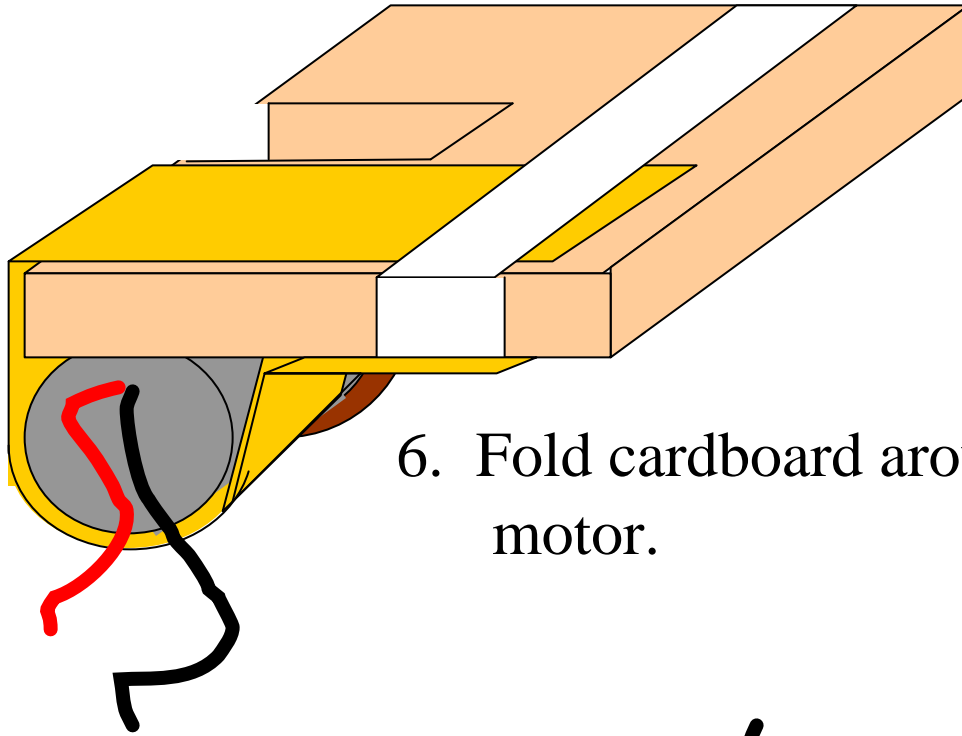
3. Place motor w/ wheel.
Allow glue to dry

4. Cut a 7 inch long piece of thin cardboard.

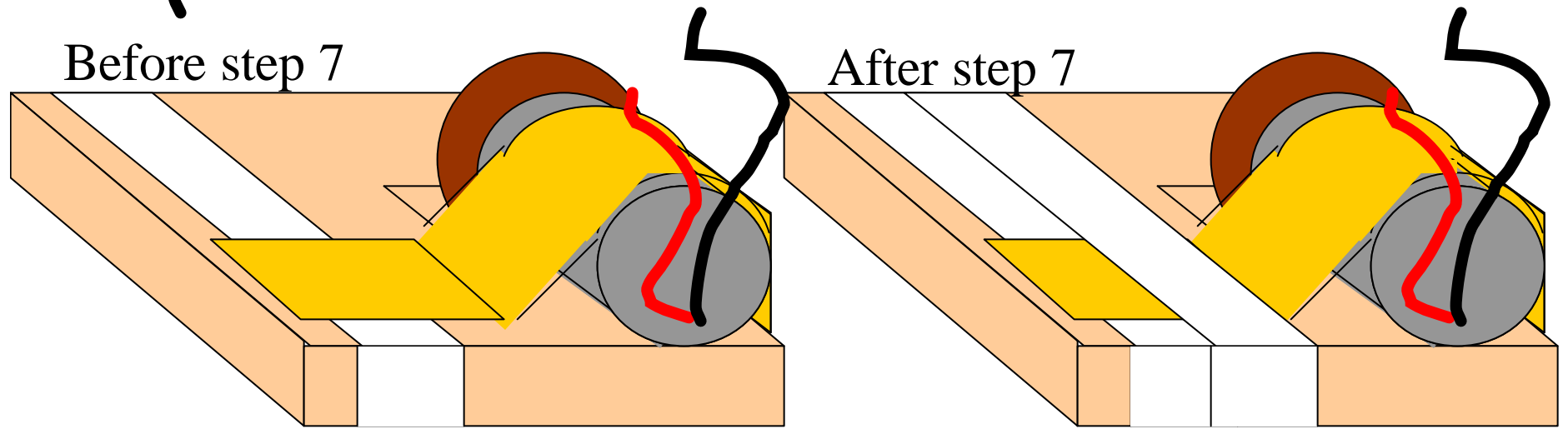


5. Tape one end of cardboard as shown.





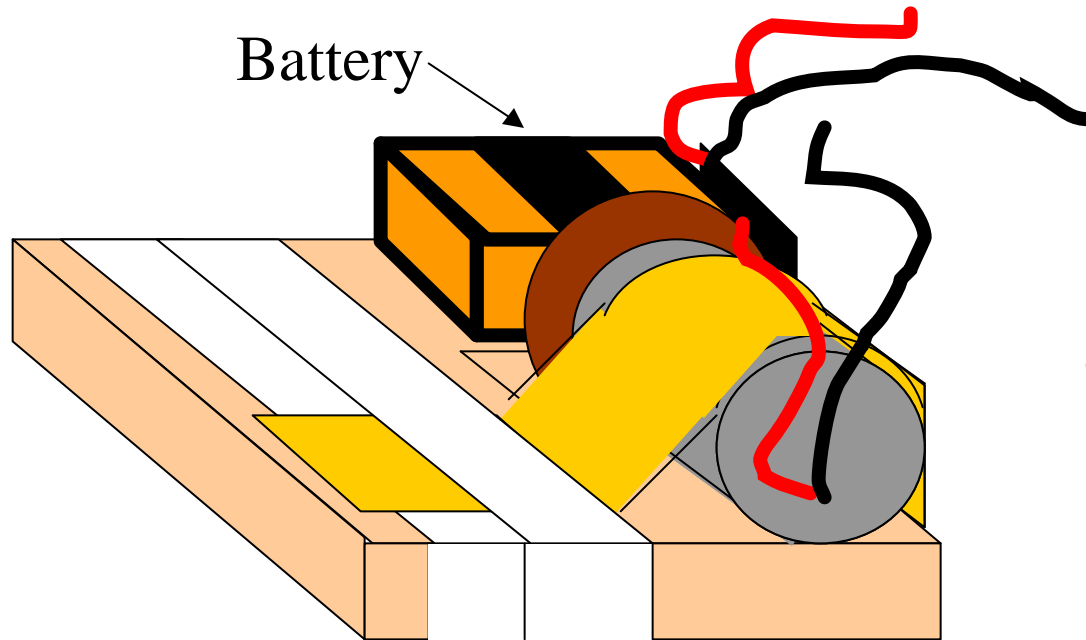
6. Fold cardboard around motor.



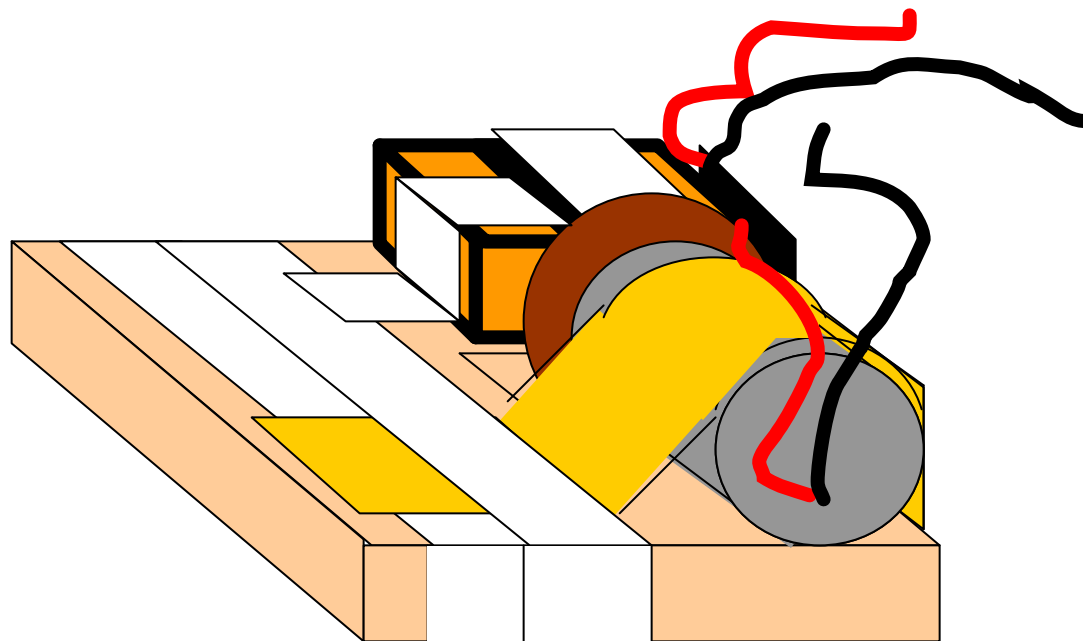
Before step 7

After step 7

7. Tape other end of cardboard as shown

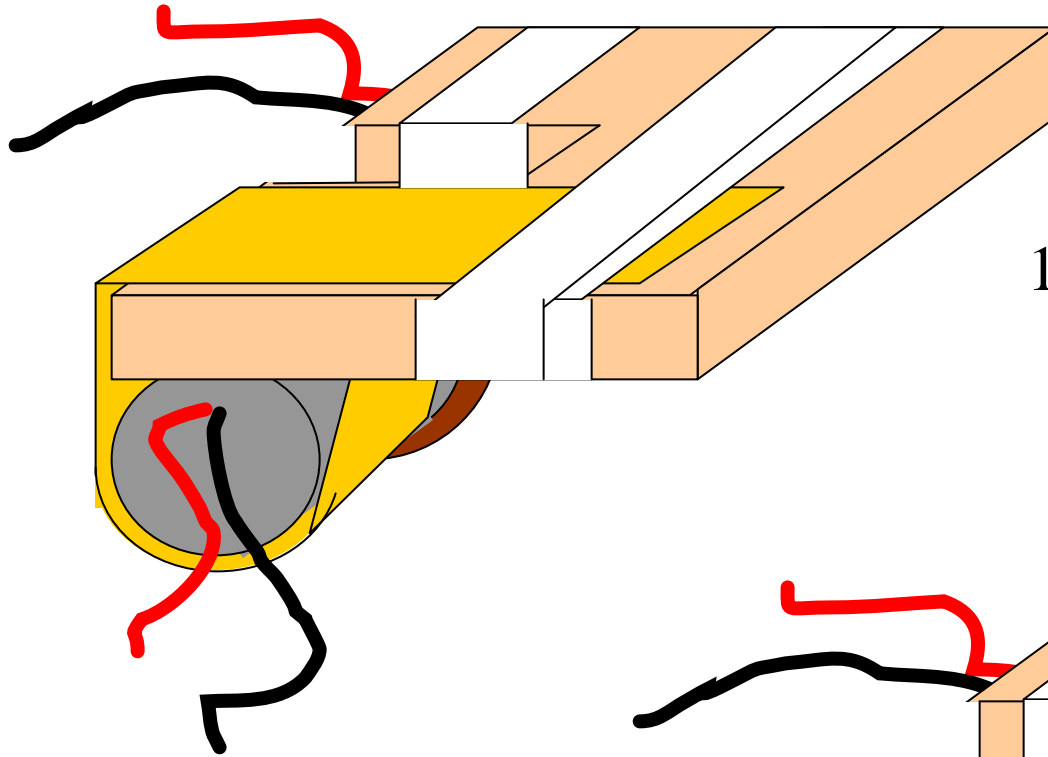


8. Place battery opposite motor

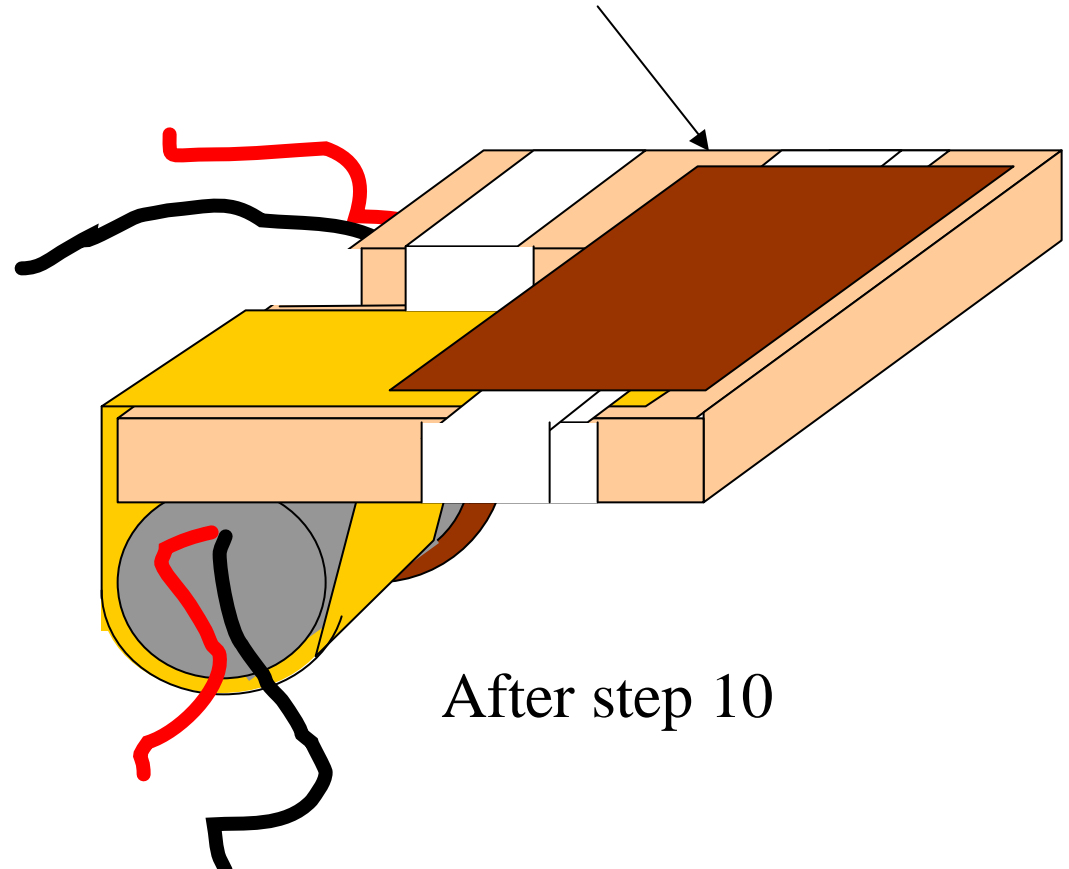


9. Tape battery in place.

Before step 10

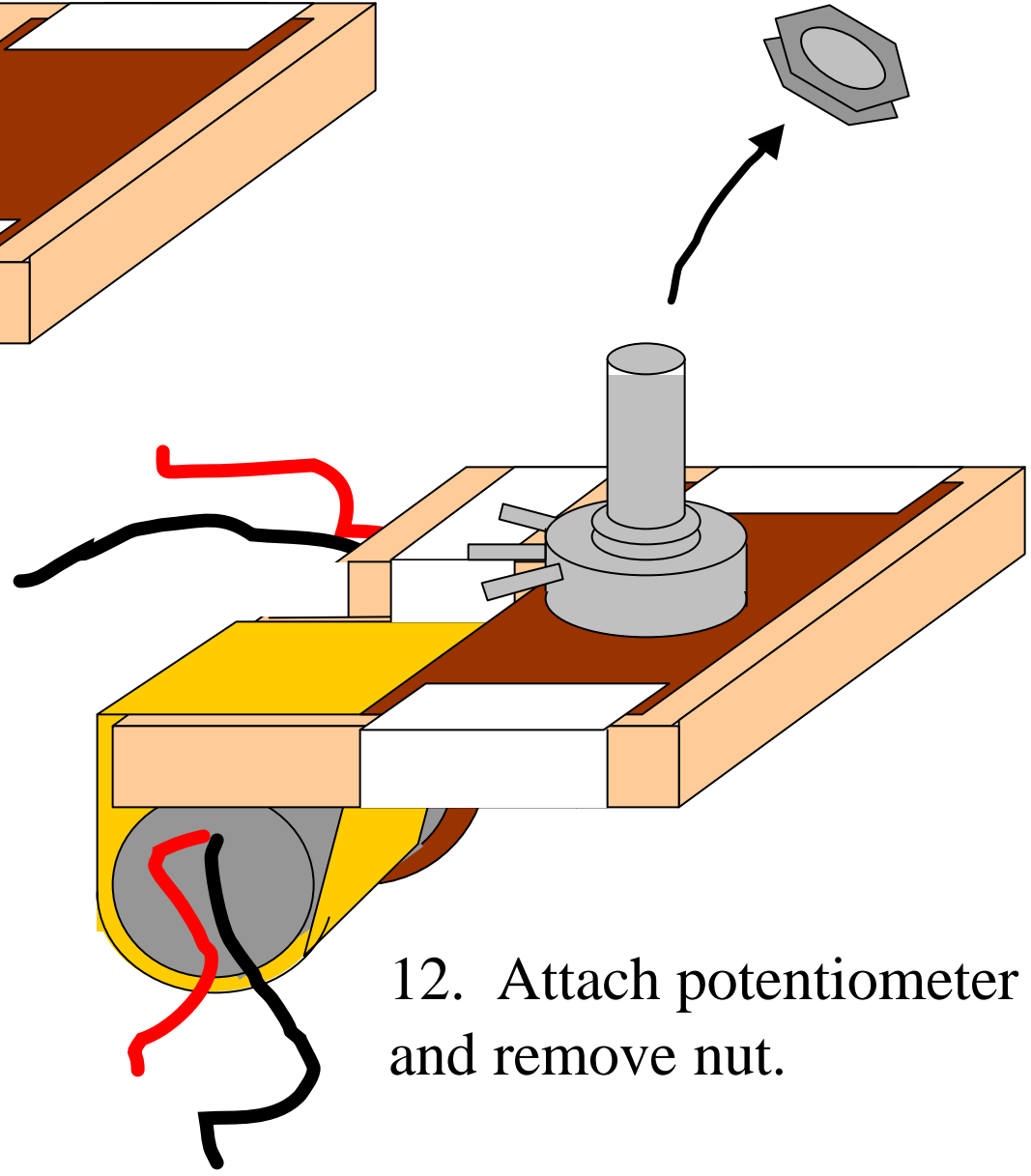
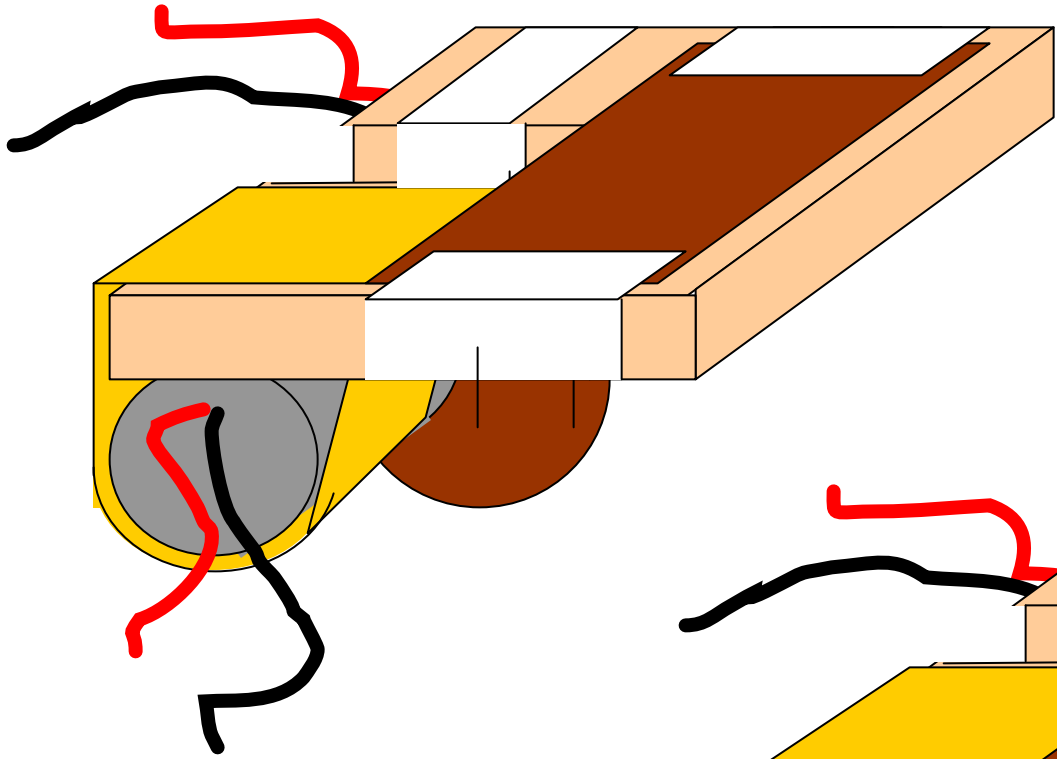


10. Add a 3 inch wide cardboard square, as shown.

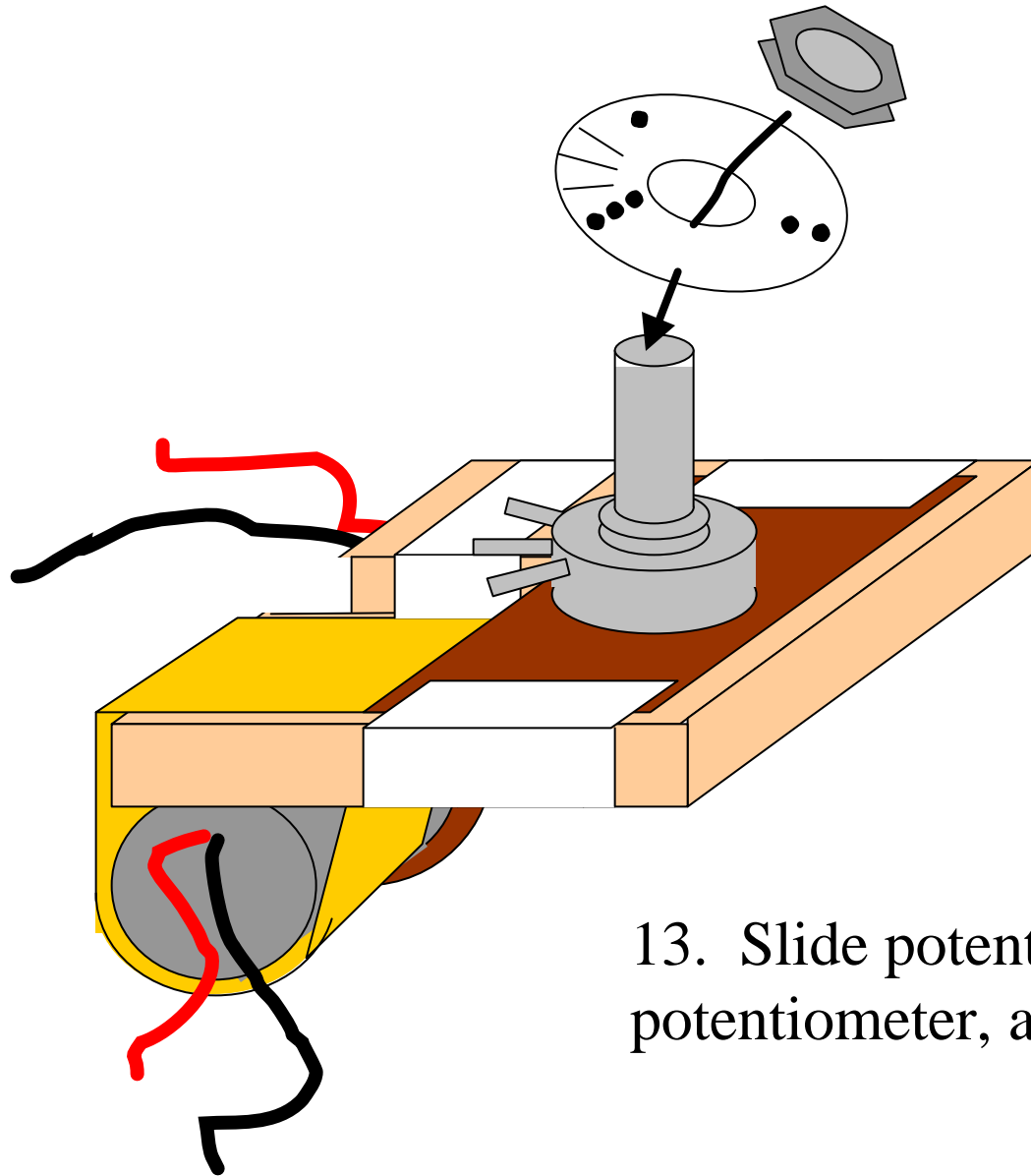


After step 10

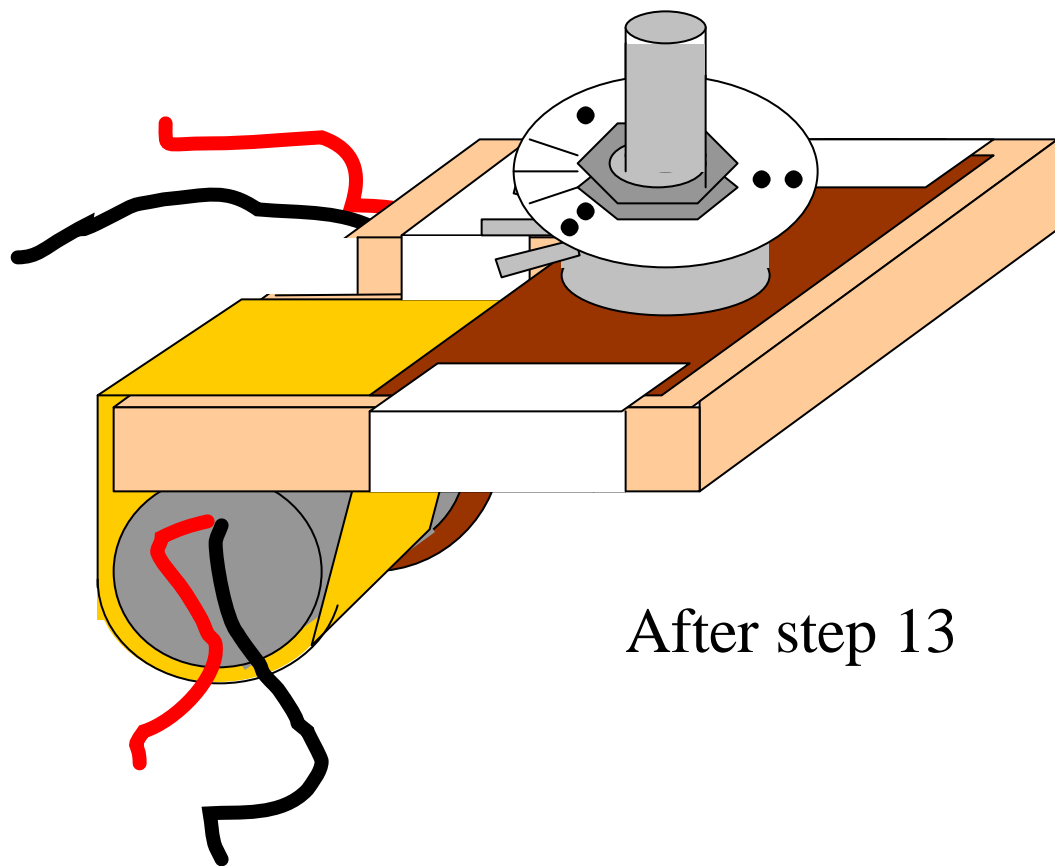
11. Tape cardboard at edges.



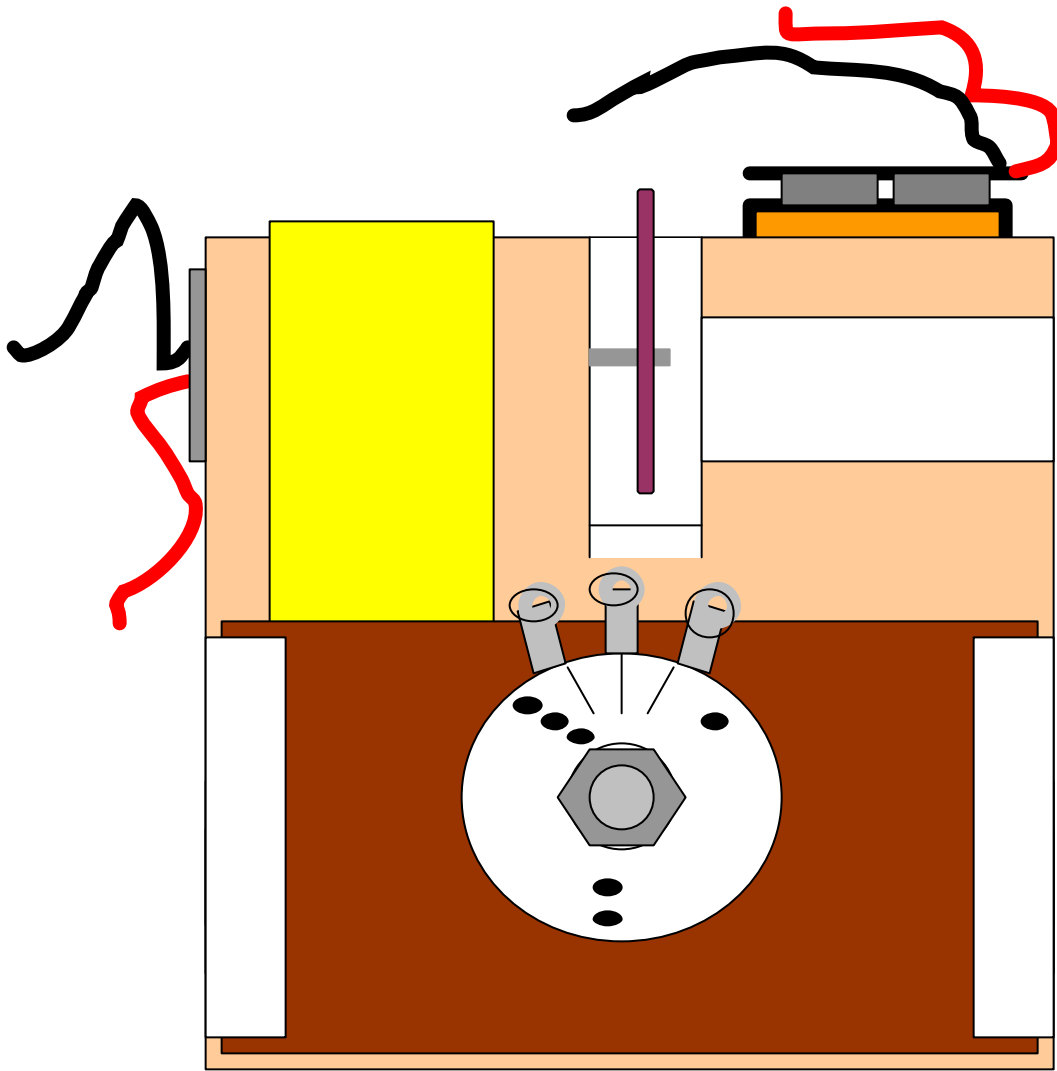
12. Attach potentiometer and remove nut.



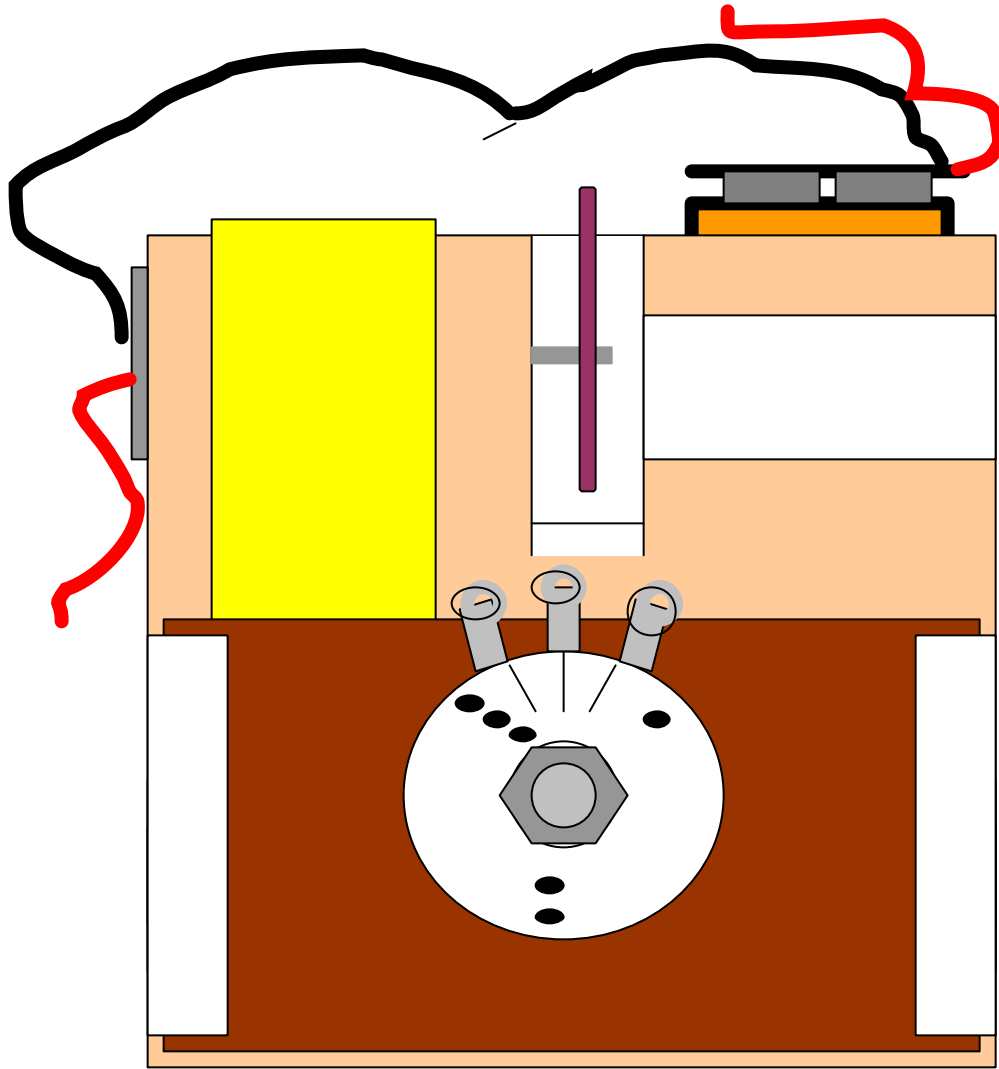
13. Slide potentiometer label onto potentiometer, and replace nut



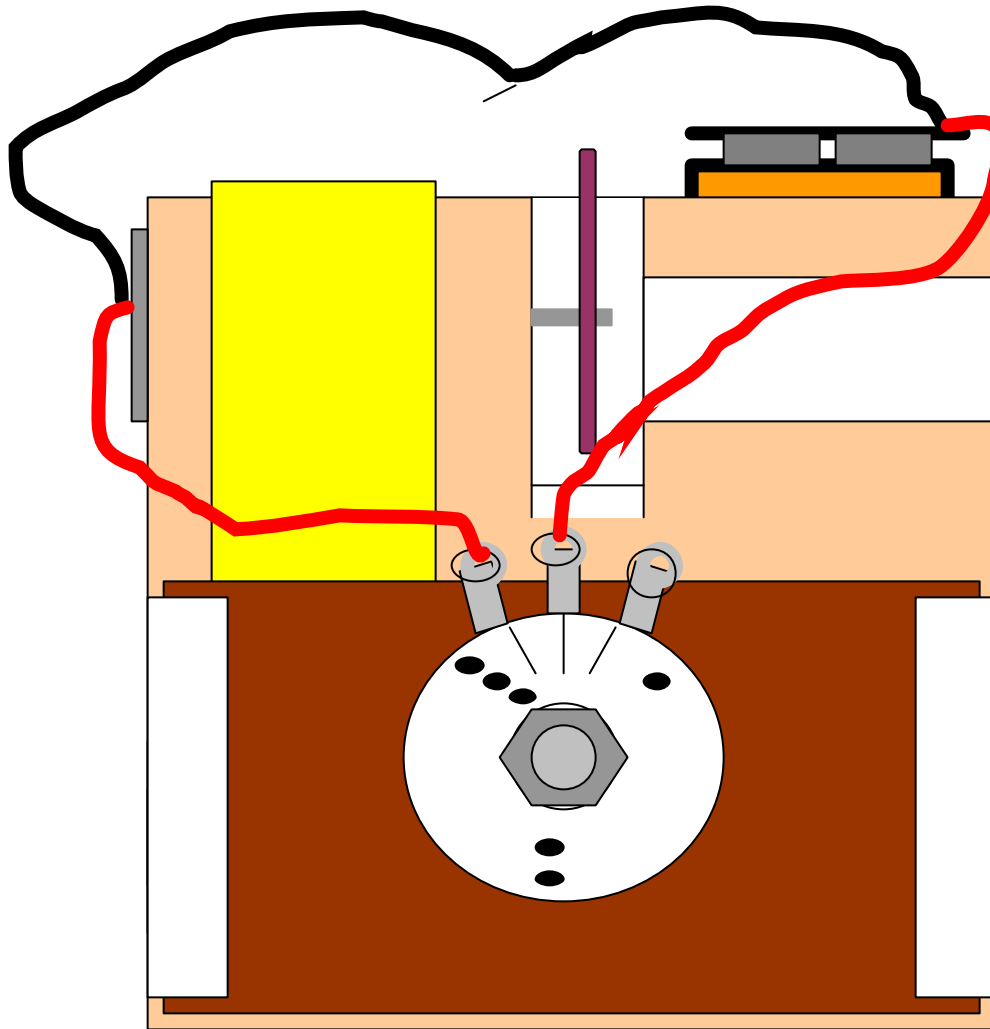
After step 13



Top view before connecting wires



14. Connect both black wires to each other. Make sure the metal parts touch. Secure with tape or solder.



14. Connect both red wires to the potentiometer at the positions shown. Tape or solder the wire on the left side. Use the middle wire to turn the motor on and off.